

>> A public health issue: access to medical expertise

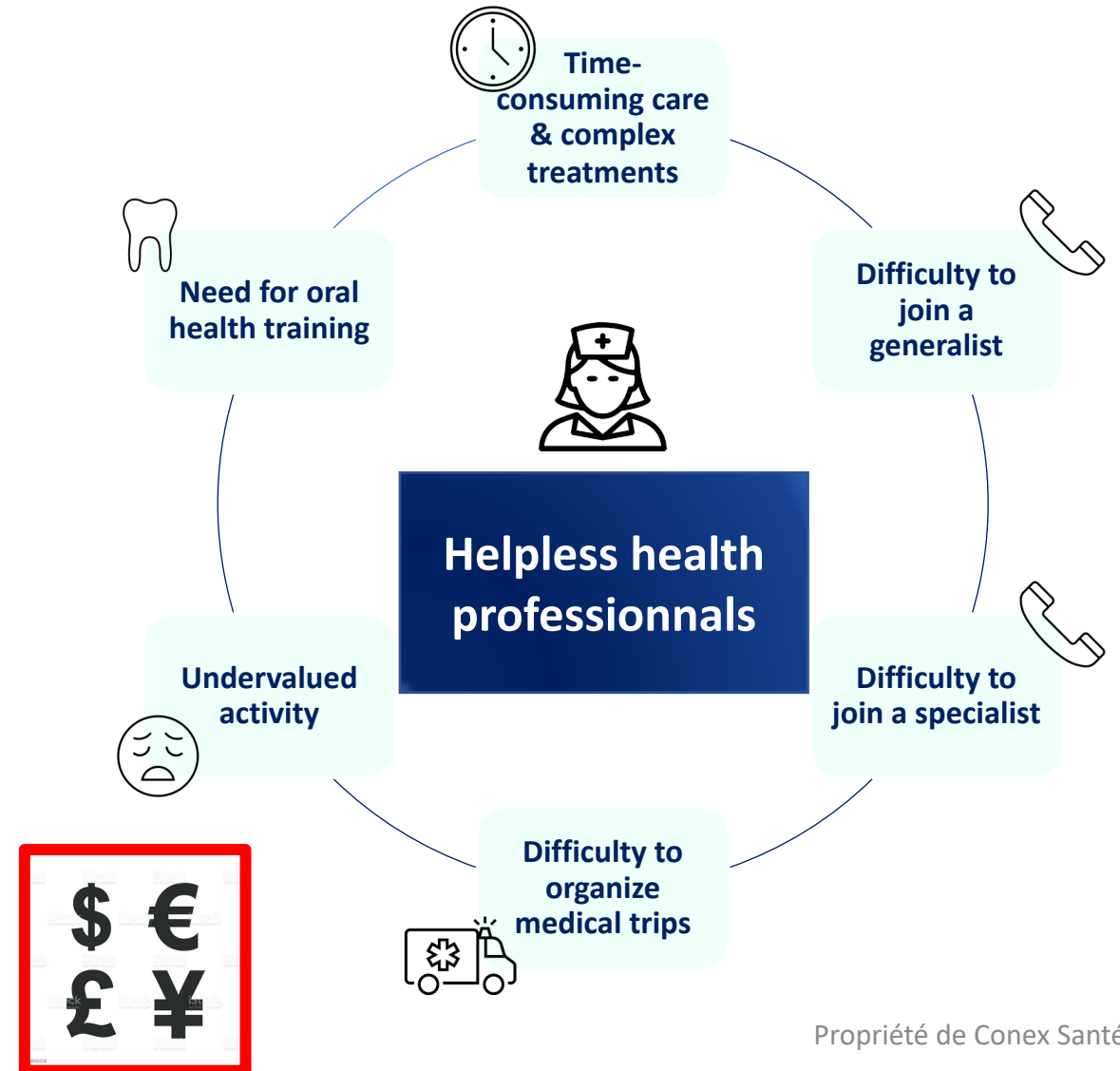
A major need for the population

3.5 billion people worldwide affected by oral diseases, especially caries
(source: global burden of disease study 2019)

Many pathologies associated with bad oral health

Pulmonary disease	Cardiac disease	Digestive disease
Under nourishment	Diabetic disease	

Isolation and self-esteem deterioration



E-DENT by Conex Santé:



Many scientific validations



Software
(offline access possible) &
Equipment



Web Access

» E-DENT by Conex Santé: a demonstration



» E-DENT by Conex Santé: innovative, simple & cost effective

8,000

medical procedures completed with e-DENT by Conex

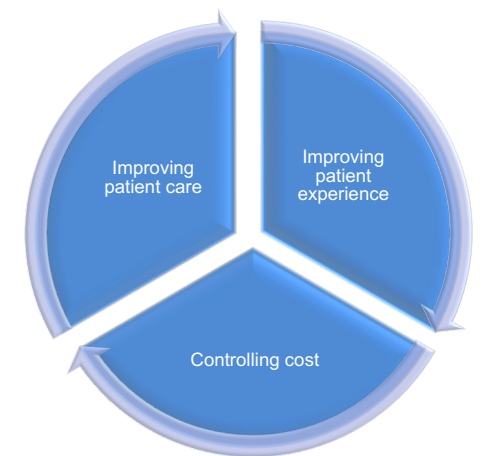
Strong collaboration



Prevention and optimization of treatment to improve patient care

Empowering dentist's decisions and actions: performing remote oral diagnosis from everywhere

Fast and effective training for health care professionals
1 day !



>> E-DENT by Conex Santé: adapted to all healthcare structures

Health institutions

Hospitals

Health clinics

Specialized
health
institutions

Elderly
institutions

Public
Structures

Private
Structures

Territorial organisations

Local

Regional

National

International

>> We connect healthcare professionals; We value the expertise of dental officers to improve patient care and oral health.

Conex Santé brings the doctors to the patient thanks to its tele expertise and teleconsultation mobile and digital solutions



Every health professional can access medical advice (teleexpertise)

Every paramedic can realize remote assisted consultation to take care of the patient (assisted teleconsultation)

We enhance collaboration and partnerships that bring together key stakeholders to build a network; the global digital health Community for oral health.

» ORGANIZATIONAL & DIGITAL INNOVATION

Fast Medical Expertise combined with fast Teleconsultation

We create, coordinate and optimize healthcare networks in order to enable the practice of a fast and reliable tele-expertise and TLC.

» A UNIQUE CONCEPT

S.T.R. 1-2-3

Mission



- ✓ to improve the working conditions of healthcare professionals, in order to improve access & quality of the patient pathway
- ✓ simplifying and expediting remote medical expertise.

✓ **ESP ++**
Multidisciplinary Care Team ++



✓ **ESS ++**
Specialized Care Team ++



✓ **ESSP ++**
Multidisciplinary Specialized Care Team ++



++ Proximity and Rapidity to practice STR= FME 1 – 2 – 3 Levels

» Conex Santé: a solution for every patient, every Dental Officers, every healthcare professional across the world



We look forward to working with all of you to improve digital oral health !

Conex Santé aims to deploy its solutions across the world

Conex Santé can be easily duplicated





Thank you



Patrice Ancillon
 pancillon@conexsante.com
 +33 (0)7 62 15 55 01

PariSanté Campus : 10 Rue d'Oradour-sur-Glâne, 75015 Paris.
 Labège : 1110 avenue de l'Occitane - Technoparc 1 - Bâtiment 3 31670 Labège.

